



UNIVERSITY *of the*
IMMACULATE CONCEPTION

Establishing an IACUC Certified Institution: The UIC Experience

Regional Health Research and Development Consortium XI
6th R & D Expo
09/22-23/16



Outline

- What to prepare?
- What is the process?
- Who will accredit?
- Is there a fee?





What is IACUC?

- responsible for reviewing, approving, and monitoring animal care and use programs and scientific procedures and protocols involving the use of laboratory animals



IACUC Functions and Obligations

- A. evaluate and approve the Animal Care and Use Program (ACUP) and the protocols of scientific procedures;
- B. monitor and review the implementation of the ACUP and scientific procedures;
- C. provide necessary technical recommendations, and guidelines/references (recommended dose ranges of drugs such as anesthetics, analgesics).



Requirements for PALAS Accreditation

- **P**ersonnel (IACUC Committee)
- **P**rogram (Animal Use and Care Program)
- **P**hysical Plant (Animal Facility)



Personnel

IACUC Committee Composition

- Veterinarian
- Practicing Scientist
- Nonscientist (someone not affiliated with the institution, at least one person)

- *At least 3 members



Role of Veterinarian and Staff

- Ensure adequate and proper animal care and use
- Work in concert with the IACUC and investigators
- Exercise professional judgment to facilitate the science in the context animal welfare



The Role of the Scientist

- Plan research in the context of quality animal care
- Accept the responsibility
- Work to strengthen the animal care and use program
- Engage in the process



The Role of the Scientist

- IACUC participation
- Know the regulations
- Be willing to communicate with administrators, regulators, and congress
- Embrace change
- Know the protocol
- Be proactive



Program

The Animal Care and Use Program

A. Institutional Policies and Responsibilities

1. Monitoring the Care and Use of Animals

a. Institutional Animal Care and Use Committee

b. Animal Care and Use Protocols

c. Multiple Major Survival Surgical Procedures

2. Veterinary Care

3. Personnel Qualifications and Training

4. Occupational Health and Safety of Personnel

B. Animal Environment, Housing, and Management

1. Physical Environment

2. Behavioral Management

3. Husbandry

C. Veterinary Medical Care

1. Preventive Medicine

2. Pain, Distress, Analgesia and Anesthesia

3. Euthanasia

D. Physical Plant

1. Functional Areas

2. Construction Guidelines



TABLE OF CONTENTS

I. Introduction	3
A. Name of the Program Unit	3
B. Overview and Purpose	3
C. Description of the Organization	4
D. Key Institutional Representatives	4
E. Accreditation History	4
F. Nature of Research, Testing and Teaching Programs	4
G. Summary of Facilities	4
II. Description of Animal Care and Use Program	4
A. Institutional Policies and Responsibilities	4
1. Monitoring the Care and Use of Animals	4
a. Institutional Animal Care and Use Committee	4
b. Animal Care and Use Protocols	6
c. Multiple Major Survival Surgical Procedures	8
2. Veterinary Care	9
3. Personnel Qualifications and Training	9
4. Occupational Health and Safety of Personnel	9
B. Animal Environment, Housing, and Management	10
1. Physical Environment	10
2. Behavioral Management	11
3. Husbandry	11
C. Veterinary Medical Care	13
1. Preventive Medicine	13
2. Pain, Distress, Analgesia and Anesthesia	14
3. Euthanasia	14
D. Physical Plant	14
1. Functional Areas	14
2. Construction Guidelines	14
Appendix A Organizational Chart	17
Appendix B Layout of the Animal House	18
Appendix C Animal Use Statement Protocol Review Form	19

Program Description Outline



Physical Plant

The Animal House





Pictures





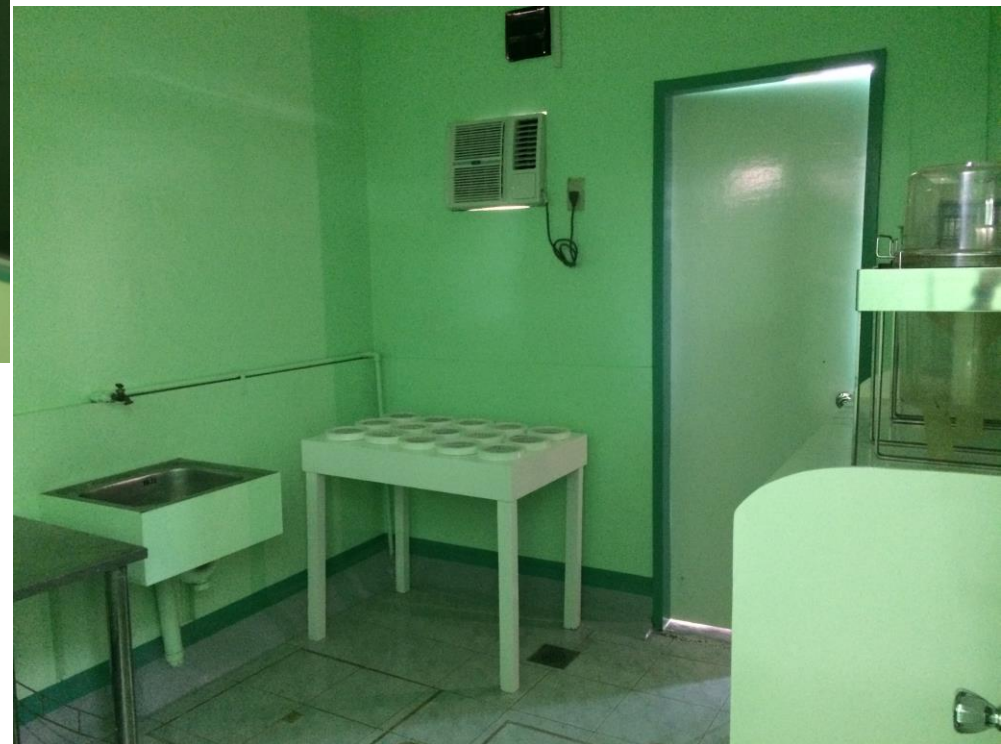
Gowning Area

Certificates





Animal Rooms

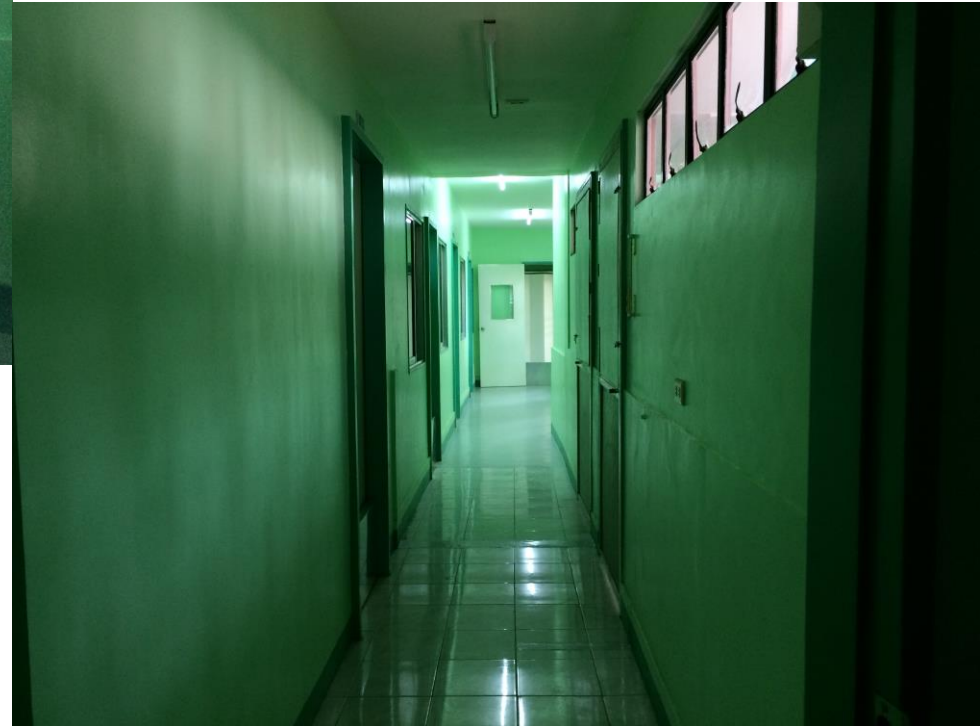


Procedure Room



Animal Room

Hallway





APPLICATION FOR ACCREDITATION
(For the Animal Care and Use Program)

1. Name of Program Unit: University of the Immaculate Conception
2. Address: Fr. Selga St., Davao City
3. Telephone Nos.: 221 8181 Fax Nos.: (082) 226-2676

4. Name and Position of Representative Person:

Pasicolan Vivien Leigh Fontanilla
Last Name First Name Middle Name

Position: Chairman, IACUC

5. Description/Profile of Entity (*attach organizational chart*):

The University of the Immaculate Conception, established in 1905, is located in Davao City, Philippines. It is a catholic institution that envisions the transformation of society in response to the signs of the times. It aims to exercise leadership in the pursuit of excellence in instruction, research and community service. As such, the University establishes its Institutional Animal Care and Use Program to cater the needs of the faculty and students in doing researches involving the use of animals. The IACUC also ensures that housing conditions and care are species-appropriate and occur in an environment that is safe and secure for both animals and staff.

6. Purposes of the program unit (*encircle one or more*):

- a. Breeding of laboratory animals
b. Exportation of progenies
c. Local supplier of lab animals
d. Others (Please specify) laboratory experiments /research

7. Identify the Key Institutional Representatives (including the IACUC Chairperson, veterinarians and researchers):

Chairman: Vivien Leigh F. Pasicolan, RPh, MSc
Attending Veterinarian: Dr. Bayani Weredi J. Vandebroek, DVM
Member: Marliou V. Tablizo, RPh, Msc

I certify that the statements made herein are correct and true.

[Signature]
Signature of Representative

[Signature]
Signature of Institutional Officer

Date: 1/18/16

Date: 1/18/16

Note: This application should be accompanied by the requirements stipulated in Section 4 of the Administrative Order.

Process

1. Application Form
2. Program Description Outline (3 copies)
3. Pay corresponding fees
4. Accreditation
5. Revision
6. Issuance of the Certificate



palas-ph.org

Home News Events

PHILIPPINE ASSOCIATION FOR LABORATORY ANIMAL SCIENCE 1998
PALAS

About Us Membership Accreditation Gallery Links Contact Us

Search...

PALAS OFFICER and BOARD OF DIRECTORS 2014-2015

Welcome to the Philippine Association for Laboratory Animal Science (PALAS)!

The Philippine Association for Laboratory Animal Science (PALAS) was established in 1998. Its primary objectives are to formulate, implement and coordinate programs and activities geared towards the development and utilization of laboratory animals in the Philippines.

It is active in the promotion of the Animal Welfare Act of 1998 and its corresponding implementing rules and regulations on the conduct of scientific procedures using quality laboratory animals (DA-AO No. 40). The promotion of animal welfare, good science and safeguarding its members' interest in

Member Login

Username
Password
 Remember me [Log in](#)

[Forgot your password?](#)

News

PHILIPPINE ASSOCIATION OF LABORATORY ANIMAL SCIENCE (PALAS) Annual Scientific Conference
Posted by: Admin May 19, 2016
THEME: Animal Models in Translational Research
May 19-20, 2016

Welcome to the Philippine Association for Laboratory Animal Science (PALAS)
Posted by: Admin Aug 26, 2015
The Philippine Association for Laboratory Animal Science (PALAS) was established in 1998. Its primary objectives are to formulate, implement and

www.palas-ph.org



PALAS Accreditation





PHILIPPINE ASSOCIATION FOR LABORATORY ANIMAL SCIENCE

presents this

ACHIEVEMENT OF PALAS ACCREDITATION

to

**UNIVERSITY OF IMMACULATE CONCEPTION
(UIC)**

Fr. Selga Street, Davao City

May 2016

Joseph S. Masangkay

Joseph S. Masangkay, DVM, PhD
Chairman, Accreditation Board

Ranier B. Villanueva

Ranier B. Villanueva, MD.
President

PALAS is duly recognized by the Department of Agriculture, Bureau of Animal Industry as an association that accredits animal facilities in the Philippines pursuant to Republic Act No. 8485 known as the "Animal Welfare Act of 1998".



**PALAS National Convention
Hive Hotel and Convention Place, QC
May 19-20, 2016**





UNIVERSITY of the IMMACULATE CONCEPTION



INSTITUTIONAL ANIMAL CARE AND USE COMMITTEE
University of the Immaculate Conception

VII. DECLARATION BY THE RESPONSIBLE PERSON:



INSTITUTIONAL ANIMAL CARE AND USE COMMITTEE University of the Immaculate Conception Fr. Selga St., Davao City

Animal Care and Use Statement Protocol Review Form

I. PROCEDURE(S) OR TITLE OF RESEARCH STUDY:

II. PURPOSE/OBJECTIVES:

III. DURATION OR TIMEFRAME:

Start _____ and end _____ of (manipulation)
procedures on animals (*excluding quarantine but including conditioning for specific*

- g. Surgical procedures (type and purpose)
 - i. Location of surgical procedure
 - ii. Description of supportive care and monitoring procedures during and after surgery
 - iii. Description of measures for possible post-surgical complications/who will supervise the application of the measures
 - iv. Name/s of surgeon and their qualifications and relevant experiences
 - h. If euthanasia of animals will be done, indicate/describe the method selected
- h. Is there a non-animal model applicable for the procedure/study?
- i. Indicate the names and qualification of all personnel who will be responsible for conducting the procedures.



ANIMAL CARE AND USE STATEMENT (Protocol Review Form)

- Should be accomplished as part of the research proposal – research can only proceed once this is approved
- Explains in full detail all aspects of the research that involves animals
- Makes sure all groups know what they will be doing before the actual conduct of the research



ANIMAL CARE AND USE STATEMENT (Protocol Review Form)

- I. PROCEDURE(S) OR TITLE OF RESEARCH/STUDY
- II. PURPOSE / OBJECTIVES
- III. DURATION OR TIMEFRAME
 - excluding quarantine but including conditioning time
- IV. RESPONSIBLE PERSON / PRINCIPAL INVESTIGATOR
 - Name/s and qualification
- V. BACKGROUND AND SIGNIFICANCE OF PROCEDURE OR RESEARCH
 - Include biomedical characteristics of the animals that are essential to the research & indicate related studies with the proposed animal model



ANIMAL CARE AND USE STATEMENT (Protocol Review Form)

- I. PROCEDURE(S) OR TITLE OF RESEARCH/STUDY
- II. PURPOSE / OBJECTIVES
- III. DURATION OR TIMEFRAME
 - excluding quarantine but including conditioning time
- IV. RESPONSIBLE PERSON / PRINCIPAL INVESTIGATOR
 - Name/s and qualification
- V. BACKGROUND AND SIGNIFICANCE OF PROCEDURE OR RESEARCH
 - Include biomedical characteristics of the animals that are essential to the research & indicate related studies with the proposed animal model



ANIMAL CARE AND USE STATEMENT (Protocol Review Form)

VI. DESCRIPTION OF METHODOLOGIES / EXPERIMENTAL DESIGN

- A. Species and type of animal
- B. Source of animals
- C. Reason/basis for selecting animal species
- D. Sex, age and number of animals (justify number)
- E. Quarantine and/or conditioning process
- F. Animal care procedures
 - Cage type, # of animals per cage
 - Cleaning method
 - Room temp., humidity, ventilation, lighting
 - Diet, feeding and watering method



ANIMAL CARE AND USE STATEMENT (Protocol Review Form)

G. Experimental or animal manipulation methods

- General description (including conditioning method)
- Dosing method
- Expected outcome, effects, adverse side effects
- Specimen or biological agent (frequency, volume, route, and method of restraint)
- Animal examination procedures
- Use of anesthetics
- Surgical procedures
- Euthanasia

H. Is there a non-animal model applicable? If so, provide reasons for not using it.



ANIMAL CARE AND USE STATEMENT (Protocol Review Form)

- It is expected that the study will be conducted according to the approved protocol
- Obtain approval from the IACUC prior to making any changes affecting the protocol



References

- RA 8485 (Animal Welfare Act of 1998)
- RA 10631 (Amendment of RA 8485, 2013)
- DA AO 40 : Conduct of Scientific Procedures using Laboratory Animals
- UFAW Handbook



UNIVERSITY of the
IMMACULATE CONCEPTION



Good animal care begins with education



lei photography